

LifeSize Control delivers
complete HD video
infrastructure management

Video Management Platform

LifeSize[®] Control™ is an all-in-one, video management software platform that provides complete management for multi-vendor environments.

Simplifying the administrative experience

LifeSize Control enables video administrators to efficiently manage growing video and audio communication networks. LifeSize Control provides intelligent automation tools that address the key video management functions, in a simple straight forward manner. New role-based administrative management gives IT directors flexibility in privileges and access controls.

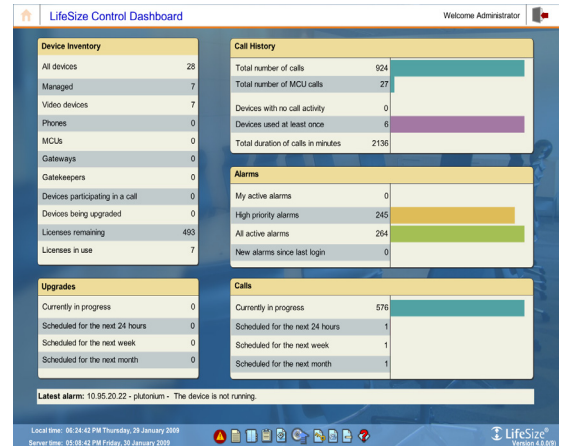
With LifeSize Control's Smart Scheduler software, and Automatic Call Establishment™, LifeSize Control frees administrators from manual scheduling. Scheduling recorded video conferences has never been easier.

LifeSize Control's proactive alarm management system keeps administrators informed with on-the-go email alerts and graphical PDF reports delivered directly to an inbox. With LifeSize Control, administrators stay informed from anywhere, 24x7.

Simplifying the end-user experience

LifeSize Control's Microsoft Exchange and Google Apps integration delivers simple, yet very effective tools for end-users to schedule video conferences. LifeSize Control makes reserving video conference resources as simple as reserving a conference room. LifeSize Control's Email integration requires no Server-side patches and no Client-side plug-ins; making LifeSize Control as easy to install as it is to use.

Absolute simplicity for end users. Confident IT administrators. Do more. Travel less. Be present with LifeSize Control.



LifeSize Control Key Features

Manage in Real-time

Dashboard homepage provides access to critical information and improves management effectiveness

System Control

Discover, manage, monitor, upgrade and schedule video communications and recordings

Multi-Vendor Support

Manage a complete multi-vendor video infrastructure with systems from LifeSize, TANDBERG, Polycom, Sony and Radvision.

Fast, Easy Scheduling

Schedule multipoint, point-to-point, or recorded conferences via the web, Microsoft Exchange or Google Calendar

Graphical Reporting

Prepackaged data and graphical reports delivered on demand or scheduled to your inbox

Global Directory Services

Automated registration and global access to directory with H.350, LDAP or active directory support

Secure

Standards-based access methods and end-to-end encryption

Smart Scheduler

Automatic resource allocation based on scheduling demands

Product Specifications – LifeSize® Control™

Graphical, Web-based Interface

All-in-one, easy to use, web-based interface
Dashboard home screen provides live snapshots of the entire video infrastructure

Multi-Vendor Video Management Platform

Discover, manage, and monitor video communication systems and infrastructure from multiple vendors including LifeSize®, TANDBERG®, Polycom®, Sony® and Radvision®

Manages infrastructure devices including gateways, gatekeepers, MCU's, and recording devices

Manages LifeSize Desktop for configuration management and directory integration. (LifeSize Desktop, version 2.0 or later)

Manages multi-vendor H.323, H.320, and SIP standards-based systems

Upgrade and downgrade video infrastructure from multiple vendors

SNMP interoperability with 3rd party network and systems management software

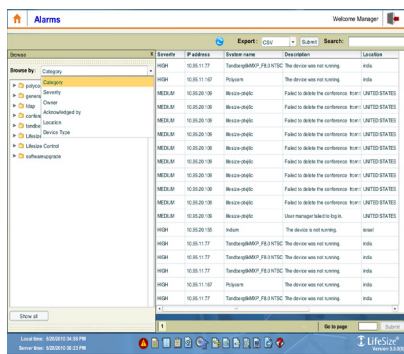
Real-Time Alarms, Filter and Workflow

Alarm management system monitors key events including but not limited to: authentication failures, software upgrades, communication issues and network issues

Notify technicians via email and mobile devices

Assign, forward, and acknowledge event alarms for multiple administrators

Set system thresholds of acceptable jitter, packet loss, and frame rate



Templates and System Backup

Configure system wide settings for individual or grouped video systems on demand or scheduled
Build templates for specific endpoint models, or a common template that can be applied to all LifeSize video systems

Compare differences between templates and deployed systems to ensure system integrity

Maintain backup and restore points for the entire organization

Instantly change any LifeSize system setting with the new device detail page

License Key Manager

Store, retrieve and apply LifeSize video conferencing system keys

Smart Scheduler

Smart Scheduler resolves capacity conflicts and allocates resources depending on conference conditions

MCU Affinity associates endpoints with MCU's for either highest quality or best bandwidth cascading

Recording server affinity associates endpoints with recording devices to deliver scheduled conference recording

Auto launch calls or reserve resources option

Auto disconnect calls option

External participants invited through IP, ISDN, e.164, or SIP addresses

Drag-and-drop web browser-based scheduling interface for administrators

MCU prefix support for customized meetings

System Groupings and Directories Services

Assign video systems and infrastructure into logical groups for group based management and multi-directory address book management

Unlimited number of groups

Unlimited number of address books

Standards-based H.350, H.350.1, and E.164 compliant user directory

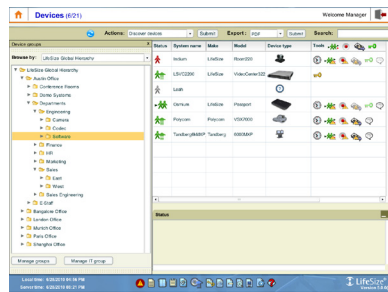
Directory integration for LifeSize Desktop (LifeSize Desktop, version 2.0 or later)

Auto populate new users

Support for managed and non-managed devices

Support for multi-vendor address book formats

Support for LDAP and Active Directory environments



Live Conference Event Manager

Add participants, drop participants, terminate the call

Show call statistics for each system

View live snapshots of current conference

Adjust volume, and mute

Enable/disable do not disturb

Live packet loss and jitter graphing

Automatic Call Establishment™ (ACE)

Intelligent call set up and automatic re-routing. No forward call planning for point-to-point to large multipoint calls

Reporting

Pre-packaged and customizable reports

Usage, inventory, diagnostic and reporting on call detail records (CDR)

Graphical and data reports by year, month, week and day

One button export to PDF and CSV

Real-time reports generated from CDRs

Unlimited report subscriptions delivered to your inbox

System Audit

Track all Control, administrator, video system, and video infrastructure initiated events

Filter system event logs based on user, system type, date

Administrative Role Management

Create unlimited custom roles for access controls and permissions over administrators and groups of devices

Segment network video devices based on user defined groups

Microsoft Exchange Integration

Schedule conferences, book resources, and invite both internal and third party participants via Microsoft Outlook

Hassle free installation - No Exchange server patches, no Outlook plug-ins

Transparent resource booking empowers end users to continue using Outlook just as they always have
E-mail based administration for registered endpoints

Google Apps Integration

Ability to schedule conferences, book resources, and invite both internal and third party participants via Gmail and Google Calendar

Hassle free installation - simply configure email accounts

Transparent resource booking empowers end users to continue using standard email clients

E-mail based administration for registered endpoints

Security

Standards-based encryption—Rijndael, 16 bit

Secure access methods include SSL, SSH, SFTP, SNMP v5

Active Directory or LDAP authentication

Transition log files

Audit features

Secure storage

Roles-based access for administrators, engineers and operators

Server Requirements

Windows Server™ 2003 & 2008

Active Directory support for Exchange Integration
LifeSize Control supports the following server configurations:

2.4GHz Pentium 4 processor, 1GB RAM, At least 500MB of free hard disk space (4GB recommended)¹

¹ Dual NIC cards are not supported on the LifeSize Control server

Client Requirements

Microsoft Internet Explorer™ version 8 or Mozilla

Firefox™ 3.6

Adobe Flash™ plug-in V.9, V.10

Licensing:

Per seat packages and unlimited site license available

Information contained in this document is preliminary and subject to change without notice. LifeSize is a registered trademark or trademark of LifeSize Communications in the U.S. and other countries. All other trademarks are property of their respective owners. All rights reserved. Copyright 2010.



LifeSize Communications:
1601 S. MoPac Expressway
Suite 100
Austin, Texas 78746 USA

Phone: +1 512 347 9300
Fax: +1 512 347 9301
Email: info@lifesize.com
www.lifesize.com

EMEA:
LifeSize Communications
Toll-Free Europe
008000 999 09 799

APAC:
LifeSize Communications
Hong Kong
Phone: +852 3189 7061