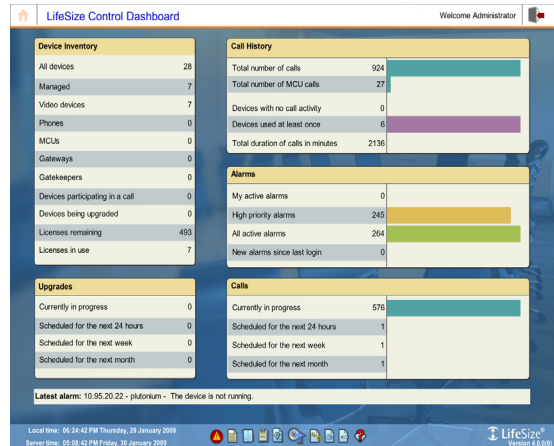


LifeSize Control delivers
complete HD video
infrastructure management



Video Management Platform

LifeSize® Control™ is an all-in-one, video management software platform that provides complete management for multi-vendor environments.

Simplifying the administrative experience:

LifeSize Control enables video administrators to efficiently manage growing video and audio communication networks. LifeSize Control provides intelligent automation tools that address the key video management functions, in a simple straight forward manner.

With LifeSize Control's Smart Scheduler software, and Automatic Call Establishment™, LifeSize Control frees administrators from manual scheduling. Scheduling video conferences has never been easier.

LifeSize Control's proactive alarm management system keeps administrators informed with on-the-go email alerts and graphical PDF reports delivered directly to an inbox. With LifeSize Control, administrators stay informed from anywhere, 24x7.

Simplifying the end-user experience:

LifeSize Control's Microsoft Exchange integration delivers a simple, yet very effective tool for end-users to schedule video conferences. LifeSize Control makes reserving video conference resources as simple as reserving a conference room. LifeSize Control's Microsoft Exchange integration requires no Exchange patches and no Outlook plug-ins; making LifeSize Control as easy to install as it is to use.

Absolute simplicity for end users. Confident IT administrators. Do more. Travel less. Be present with LifeSize Control.

LifeSize Control Key Features

Manage in Real-time

Dashboard homepage provides access to critical information and improves management effectiveness

System Control

Discover, manage, monitor, upgrade and schedule video communications

Multi-Vendor Support

Manage a complete multi-vendor video infrastructure with systems from LifeSize, TANDBERG, Polycom, Sony and Radvision

Fast, Easy Scheduling

Schedule multipoint or point-to-point conferences using a web browser or with Microsoft Exchange Integration

Graphical Reporting

Prepackaged data and graphical reports delivered on demand or scheduled to your inbox

Global Directory Services

Automated registration and global access to directory with H.350, LDAP or active directory support

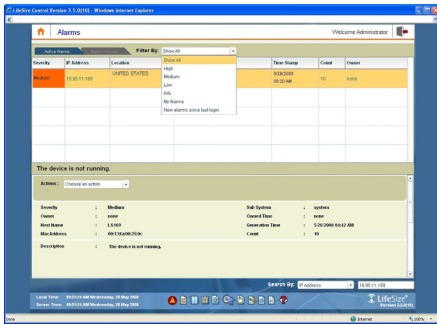
Secure

Standards-based access methods and end-to-end encryption

Smart Scheduler

Automatic resource allocation based on scheduling demands

Product Specifications – LifeSize® Control™



Graphical, Web-based Interface

All-in-one, easy to use, web-based interface
Dashboard home screen provides live snapshots of the entire video infrastructure

Multi-Vendor Video Management Platform

Discover, manage, and monitor video communication systems and infrastructure from multiple vendors including LifeSize®, TANDBERG®, Polycom®, Sony® and Radvision®

Manages infrastructure devices including gateways, gatekeepers, and MCU's

Manages multi-vendor H.323, H.320 standards-based systems

Upgrade and downgrade video infrastructure from multiple vendors

SNMP interoperability with 3rd party network and systems management software

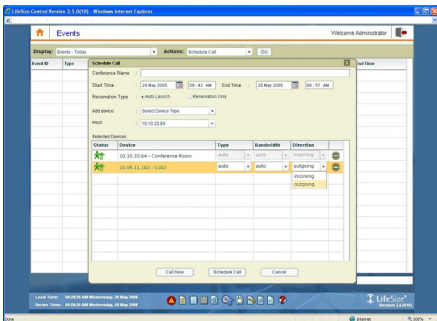
Real-Time Alarms, Filter and Workflow

Alarm management system monitors key events including but not limited to: authentication failures, software upgrades, communication issues and network issues

Notify technicians via email and mobile devices

Assign, forward, and acknowledge event alarms for multiple administrators

Control system thresholds of acceptable jitter, packet loss, and frame rate



Templates and System Backup

Configure system wide settings for individual video systems or for a group of video systems

Build templates for specific endpoint models, or a common template that can be applied to all LifeSize video systems

Compare differences between templates and deployed systems to ensure system integrity

Maintain backup and restore points for the entire organization

Instantly change any LifeSize system setting with the new device detail page

License Key Manager

Store, retrieve and apply LifeSize video conferencing system keys

Smart Scheduler

Smart Scheduler resolves capacity conflicts and allocates resources depending on conference conditions

MCU Affinity associates endpoints with MCU's for either highest quality or best bandwidth cascading

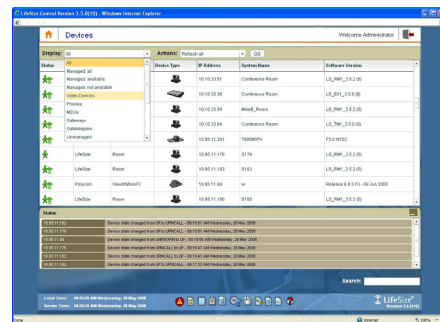
Auto launch calls or reserve resources option

Auto disconnect calls option

External participants invited through IP, ISDN, e.164, or SIP addresses

Drag-and-drop web browser-based scheduling interface for administrators

MCU prefix support for customized meetings



Directories Services

Standards-based H.350, E.164 compliant user directory
Auto populate new users

Support for multi-vendor address book formats

Support for open LDAP and active directory environment

Live Conference Event Manager

Add participants, drop participants, terminate the call
Show call statistics for each system

View live snapshots of current conference

Adjust volume, and mute

Enable/disable do not disturb

Automatic Call Establishment™ (ACE)

Intelligent call set up and automatic re-routing. No forward call planning for point-to-point to large multipoint calls

Reporting

Pre-packaged and customizable reports

Usage, inventory, diagnostic and reporting on call detail records (CDR)

Graphical and data reports by year, month, week and day

One button export to PDF and CSV

Real-time reports generated from call detail records
Unlimited report subscriptions delivered to your inbox

Microsoft Exchange Integration

Schedule conferences, book resources, and invite both internal and third party participants via Microsoft Outlook

Hassle free installation - No Exchange server patches, no Outlook plug-ins

Transparent resource booking empowers end users to continue using Outlook just as they always have

E-mail based administration for registered endpoints

Security

Standards-based encryption—Rijndael, 16 bit

Secure access methods include SSL, SSH, SFTP, SNMP v3

Active Directory or LDAP authentication

Transition log files

Audit features

Secure storage

Roles-based access for administrators, engineers and operators

Server Requirements

Windows Server™ 2003

Active Directory support if not installing the bundled Open LDAP

LifeSize Control supports the following server configurations:

2.4GHz Pentium 4 processor, 1GB RAM, At least 500MB of free hard disk space (4GB recommended)¹

¹ Dual NIC cards are not supported on the LifeSize Control server

Client Requirements

Microsoft Internet Explorer™ 6.0 SP2, 7, 8 or Mozilla Firefox™ 3.5

Adobe Flash™ plug-in V.9, V.10

Licensing:

Per seat packages and unlimited site license available

Information contained in this document is subject to change without notice. LifeSize® is the registered trademark or trademark of LifeSize Communications Inc. All other trademarks are the property of their respective owners. All rights reserved. September 2009.



Corporate Headquarters: Phone: +1 512 347 9300
901 S. Mopac Expressway Fax: +1 512 347 9301
Building 3, Suite 300 Email: info@lifesize.com
Austin, Texas 78746 USA www.lifesize.com

EMEA: LifeSize Communications
Toll-Free Europe 008000 999 09 799
APAC: LifeSize Communications
Hong Kong
Phone: +852 8239 3695